

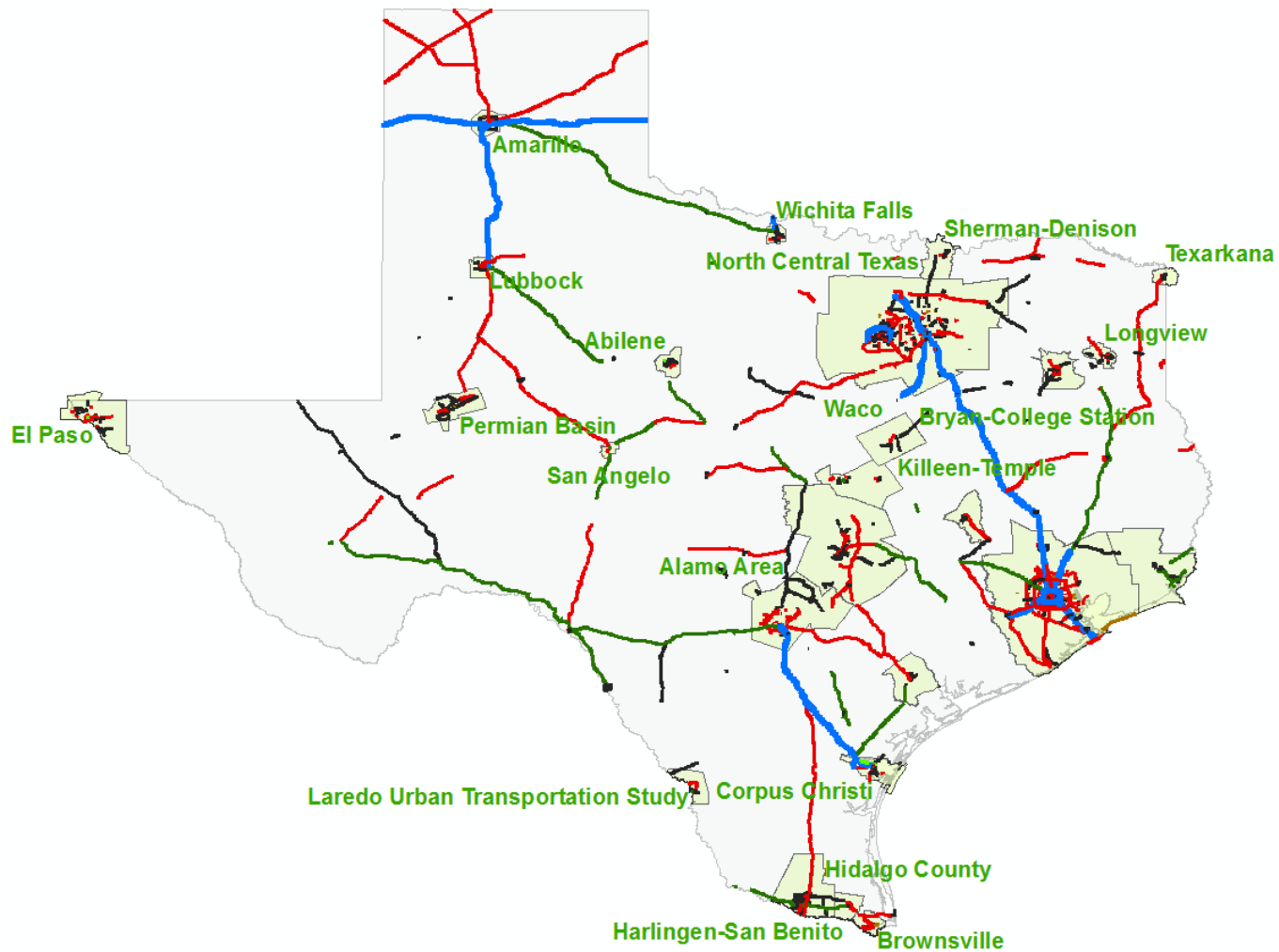
# MAP-21/FAST ACT Bridge Performance Measures

Tom Yarbrough, P.E.  
Bridge Management Engineer  
Texas Department of Transportation

All NHS Bridges, defined as

“all bridges carrying the NHS, which includes on- and off-ramps connected to the NHS within a State, and bridges carrying the NHS that cross a State border, regardless of ownership”

# National Highway System and Texas MPOs



## What to Report?

- Percent of NHS bridges by deck area in Good Condition
- Percent of NHS bridges by deck area in Poor Condition

# Assessing Bridge Conditions

- Compare the National Bridge Inspection (NBI) Condition Ratings for the following components:
  - Item 58 Deck
  - Item 59 Superstructure
  - Item 60 Substructure
  - Item 62 Culverts
- Condition ratings are on a 0-9 scale, with 9 signifying “excellent” condition, and 0 signifying “failed” condition”.

## Assessing Bridge Conditions

- A minimum condition rating less than or equal to 4 is considered “Poor”.
- A minimum condition rating greater than or equal to 7 is considered “Good”.
- By implication, a condition rating of 5 or 6 implies “Fair” condition (but this category is not reported)
- The performance indicator (“Good” or “Poor” condition) for each bridge is then weighted by the bridge deck area to determine
  - Percent of NHS bridges by deck area classified as in Good condition
  - Percent of NHS bridges by deck area classified as in Poor condition

# Target Setting

## State DOTs

- Must establish targets for all bridges carrying the NHS
- Must establish statewide 2- and 4-year targets by May 20, 2018, and report targets by October 1, 2018, the Baseline Performance Report
- May adjust 4-year targets at the Mid Performance Period Progress Report (October 1, 2020)

## MPOs


- Support the relevant State DOT 4-year target , or
- Establish their own targets by 180 days after the State DOT target is established

## Target Setting – Additional Considerations

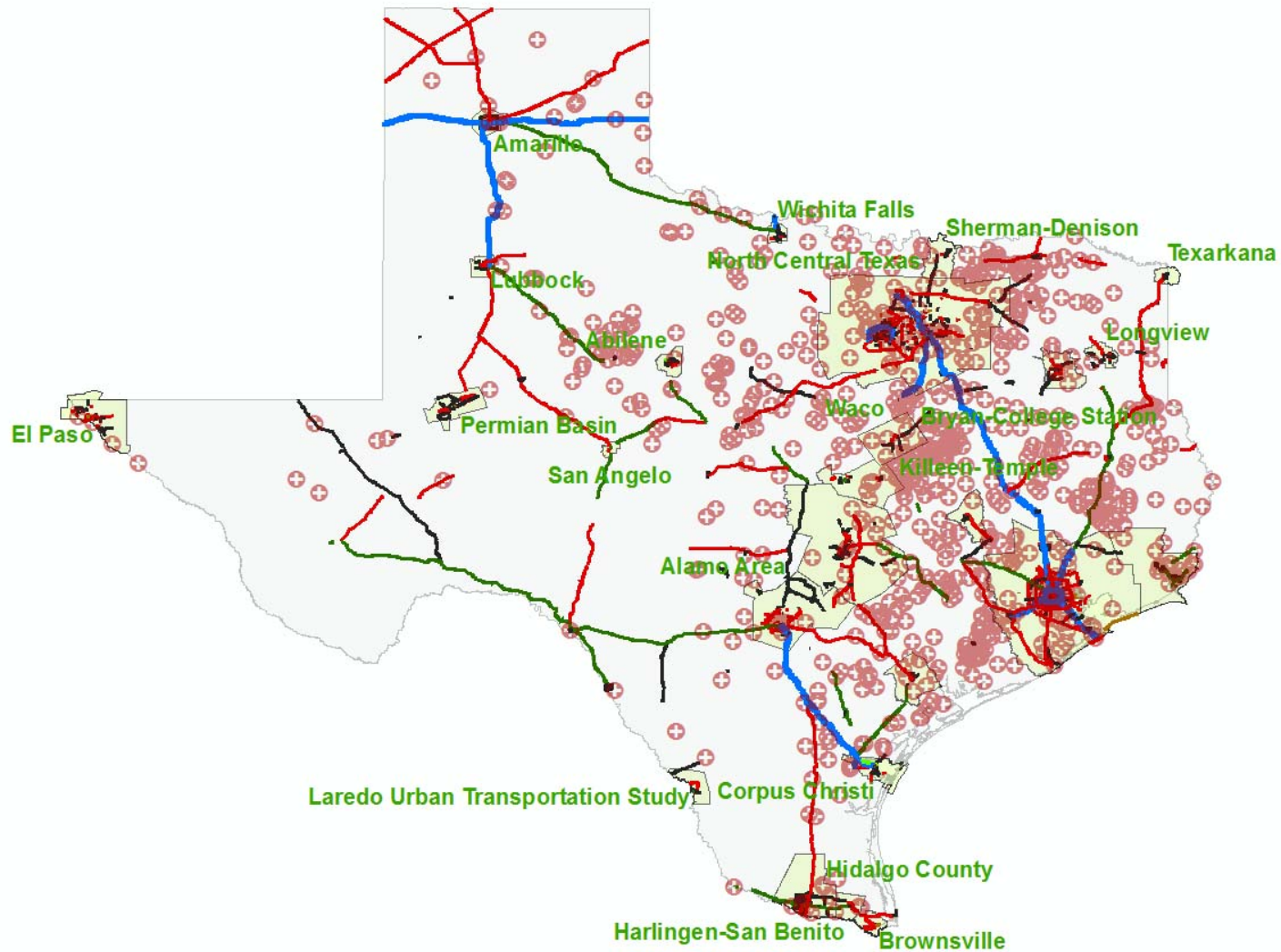
- If, for 3 consecutive years more than 10.0% of a State DOT's NHS total deck area is classified as Structurally Deficient, the State DOT must obligate and set aside National Highway Performance Program (NHPP) funds for eligible projects on bridges on the NHS
- A Structurally Deficient bridge has deteriorated to the point that load-carrying capacity has diminished over the bridge's original, as-built condition, or the bridge and its approach roadway is frequently overtopped with water, resulting in significant to severe traffic delays.
- Deck area of all border bridges counts toward both States DOTs' totals



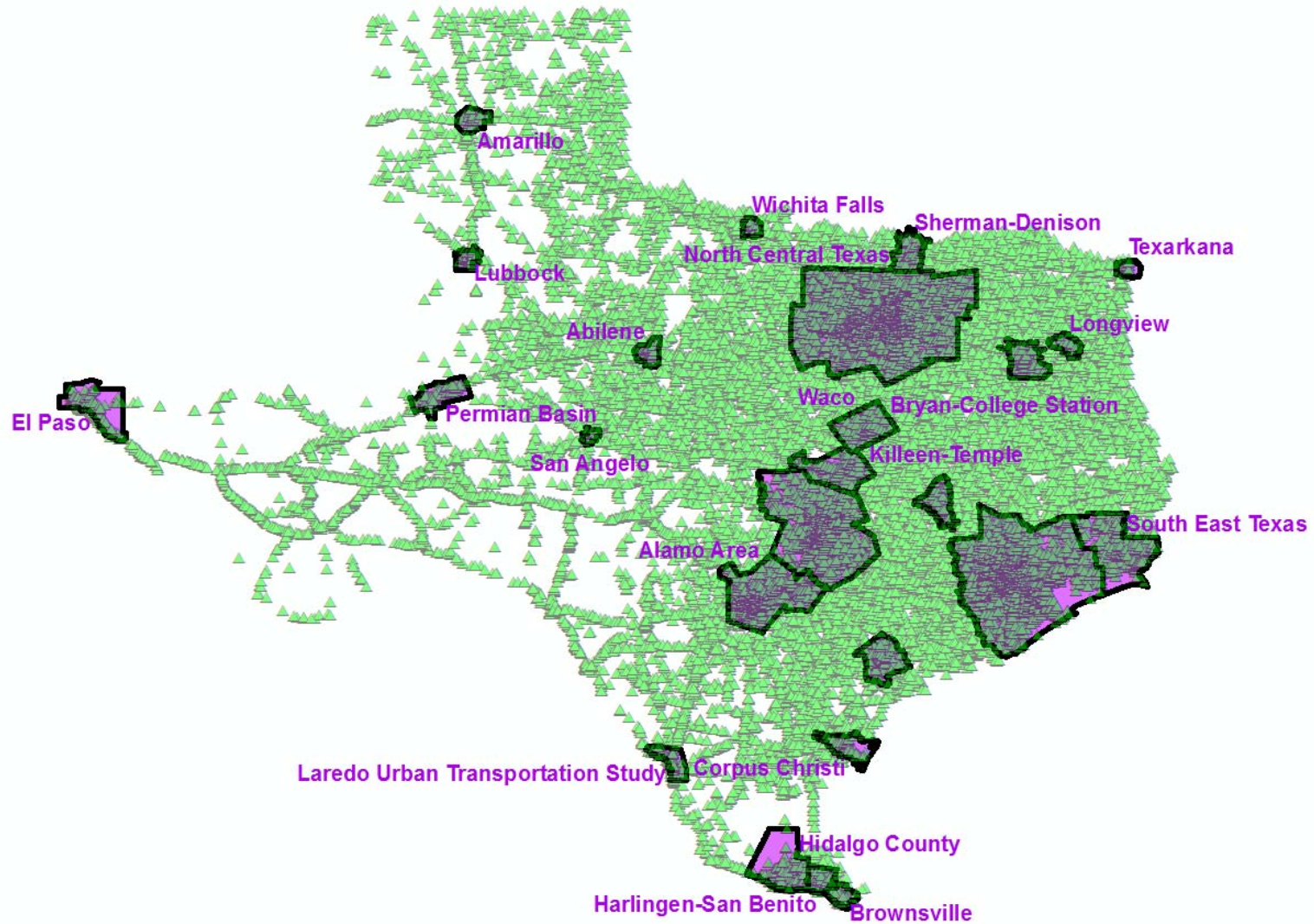
## Bridge Conditions in Texas (9/15/2017)

Asset Group	% Good	% Poor
Statewide (All)	52.0	1.0
 STATEWIDE (NHS)	50.1	0.9
Statewide (non-NHS)	54.5	1.2
Off-System (All)	54.3	1.3
Off-System (NHS)	47.2	0.1
Off-System (non-NHS)	56.6	1.7
On-System (All)	51.7	1.0
On-system (NHS)	50.3	1.0
On-system (non-NHS)	53.7	1.0

# Texas MPOs, NHS, and SD Bridges



# Texas MPOs and Texas Bridges



<b>MPO</b>	<b>Good</b>	<b>Fair</b>	<b>Poor</b>
Abilene	41.27%	57.12%	1.61%
Alamo Area	42.89%	57.11%	0.00%
Amarillo	21.03%	72.35%	6.62%
Brownsville	56.28%	43.72%	0.00%
Bryan - College Station	67.66%	32.34%	0.00%
Capitol Area	69.28%	30.72%	0.00%
Corpus Christi	31.57%	68.43%	0.00%
El Paso	50.73%	49.27%	0.00%

<b>MPO</b>	<b>Good</b>	<b>Fair</b>	<b>Poor</b>
Harlingen - San Benito	49.07%	50.93%	0.00%
Hidalgo County	54.29%	45.71%	0.00%
Houston - Galveston Area	48.51%	51.00%	0.48%
Killeen - Temple	58.10%	41.40%	0.51%
Laredo UTS	39.22%	60.78%	0.00%
Longview	39.22%	60.78%	0.00%
Lubbock	65.91%	34.09%	0.00%
North Central Texas	54.23%	43.41%	2.36%

<b>MPO</b>	<b>Good</b>	<b>Fair</b>	<b>Poor</b>
Permian Basin	37.41%	62.59%	0.00%
San Angelo	76.24%	23.76%	0.00%
Sherman - Denison	41.35%	58.65%	0.00%
SouthEast Texas	35.33%	60.80%	3.88%
Texarkana	77.02%	22.98%	0.00%
Tyler	61.00%	39.00%	0.00%
Victoria	49.18%	46.03%	4.79%
Waco	45.42%	54.58%	0.00%
Wichita Falls	44.51%	55.49%	0.00%

# Questions ?