

Regionalization

A Business Approach To Field Operations



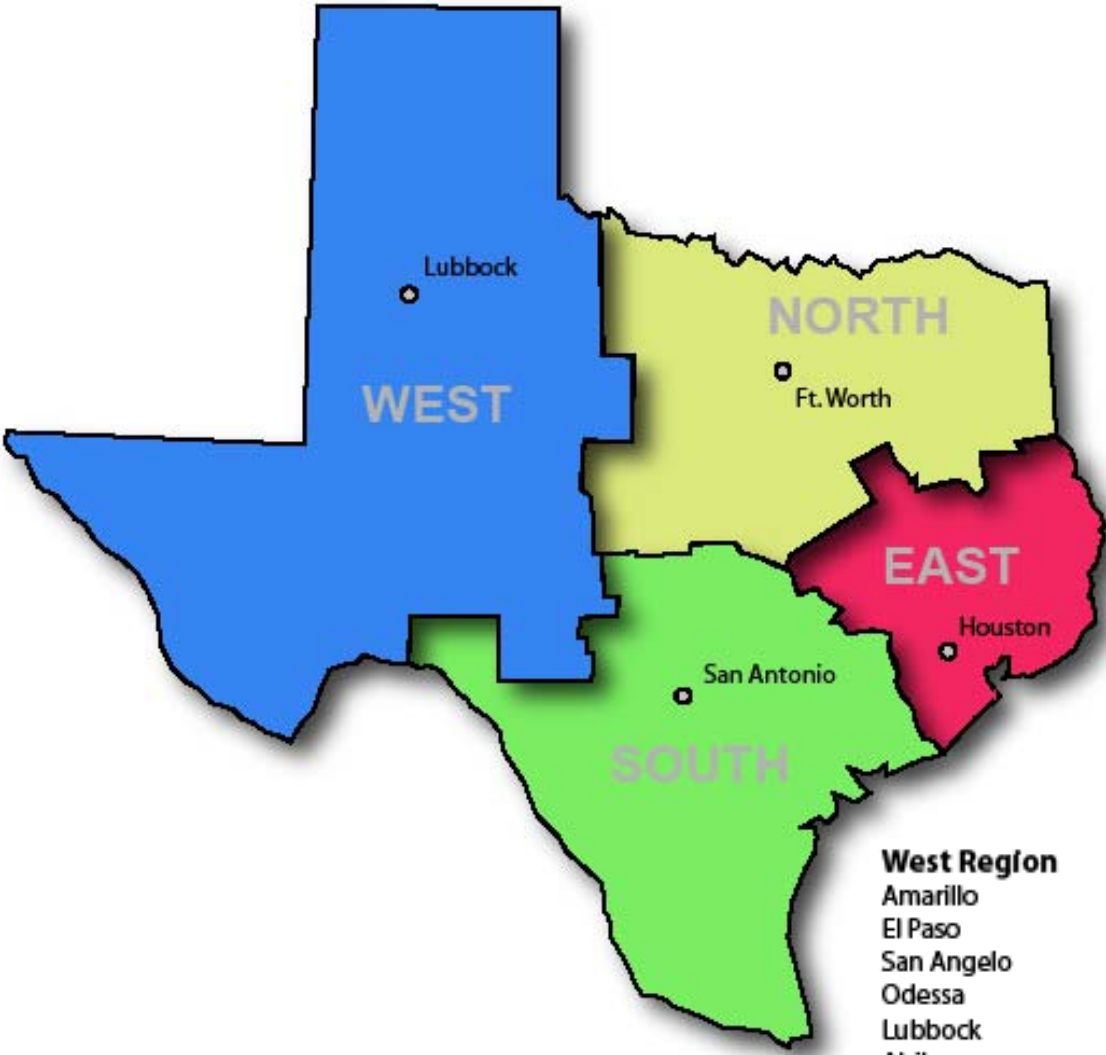
Regionalization of Texas Department of Transportation

Regionalization

- **Regional Functions/Org Charts**
- **Regionalization Briefly**
- **What Regions Are and Aren't**
- **Regions and the MPO**
 - Or “How does this affect ME?”



The Regions



- West Region**
Amarillo
El Paso
San Angelo
Odessa
Lubbock
Abilene
Childress

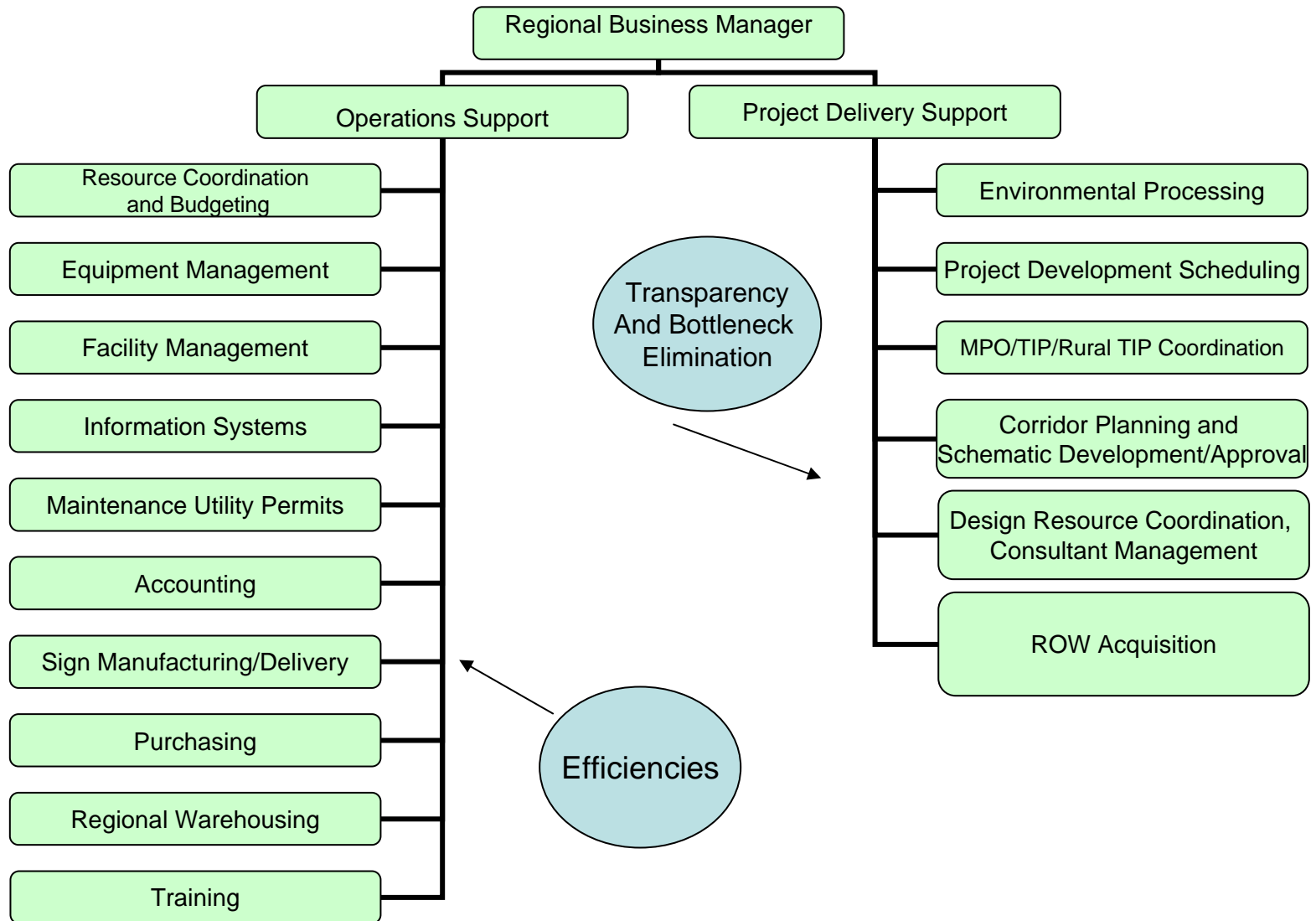
- North Region**
Atlanta
Fort Worth
Tyler
Wichita Falls
Paris
Dallas
Waco
Brownwood

- South Region**
Yoakum
Pharr
Corpus
San Antonio
Laredo
Austin

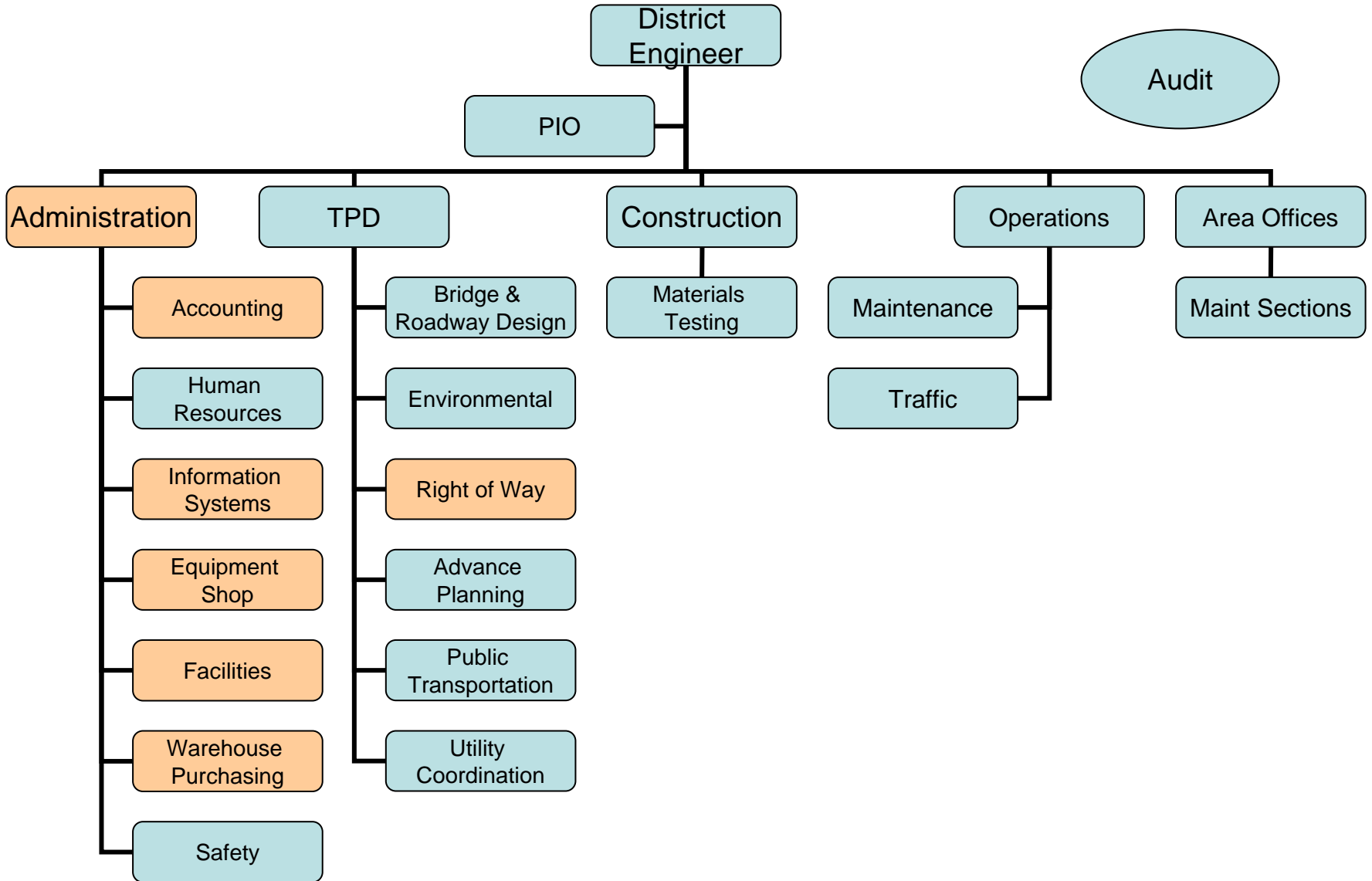
- East Region**
Beaumont
Bryan
Lufkin
Houston



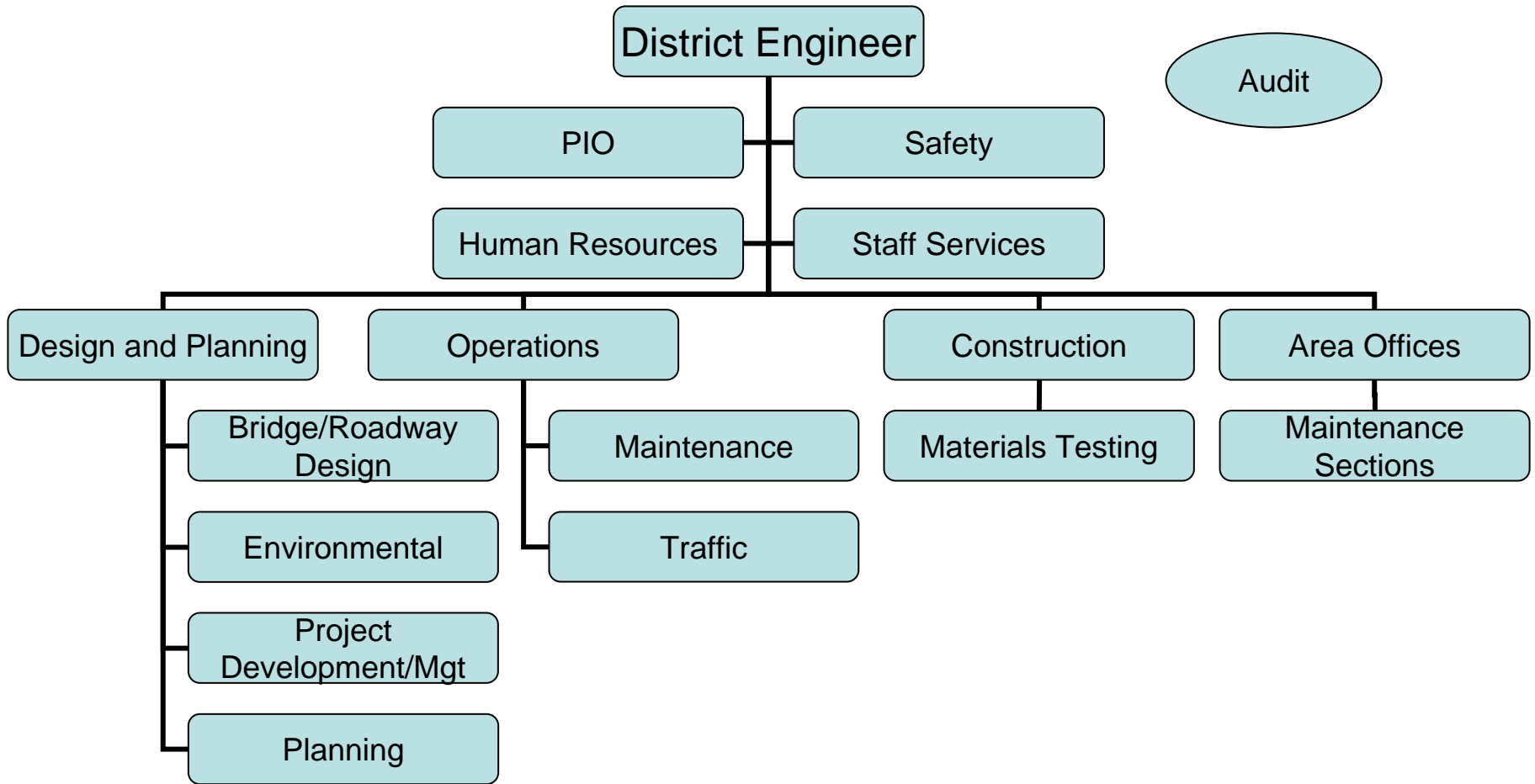
Regional Functions



FY09 District Org Chart



FY10 District Org Chart



TxDOT Restructuring



Regionalization of Texas Department of Transportation

TxDOT “Functional Area Alignment”



Regionalization of Texas Department of Transportation

Why Regionalize

Pennies to the Pavement

- **FY08/09 Savings - \$199M**
 - Decreased Fleet Capital Purchasing
 - Increased Damage Claims Collections
 - Reduced personnel by over 1500
 - Reduced unnecessary roadside expenditures
- **Reduced Operational Costs**
 - More Projects
 - Or in a time of declining revenue
 - We can deliver more of the anticipated projects



Regions – What We Are

- What We Are
 - Support for Districts
 - Support for Districts
 - Support for Districts
- What We're About
 - Efficiency
 - Less Resources; same or better support
 - Accountability
 - Performance measures; everyone equally busy
 - Transparency
 - Project information, schedules, funding, priorities in the light of day
 - Better decision making



Regions – What We Aren't

- Another District
- Above the District
- Another level of bureaucracy

- District Responsibilities
 - Programming Decisions
 - Liaison with Policy Board and MPO Staff for
 - Project Programming
 - Project Delivery



Regions and the MPO

- Bottom Line
 - Regions are about Support
 - Districts are about Operations and Delivery

- Regions
 - Short Term
 - UPWP Contract Administration
 - STPMM/CMAQ Program Agreement Administration
 - Assist Districts/MPO's with TIP as needed



Regions and the MPO

- Regions
 - Longer Term
 - Project Funding/Scheduling Data Management
 - Project Financial Plans into Financially Constrained Statewide Plan
 - Total Project Costs
 - Single database from which all multi-year plans are generated
 - RPO Contract (if RPO's happens)
 - Multiple districts in one RPO

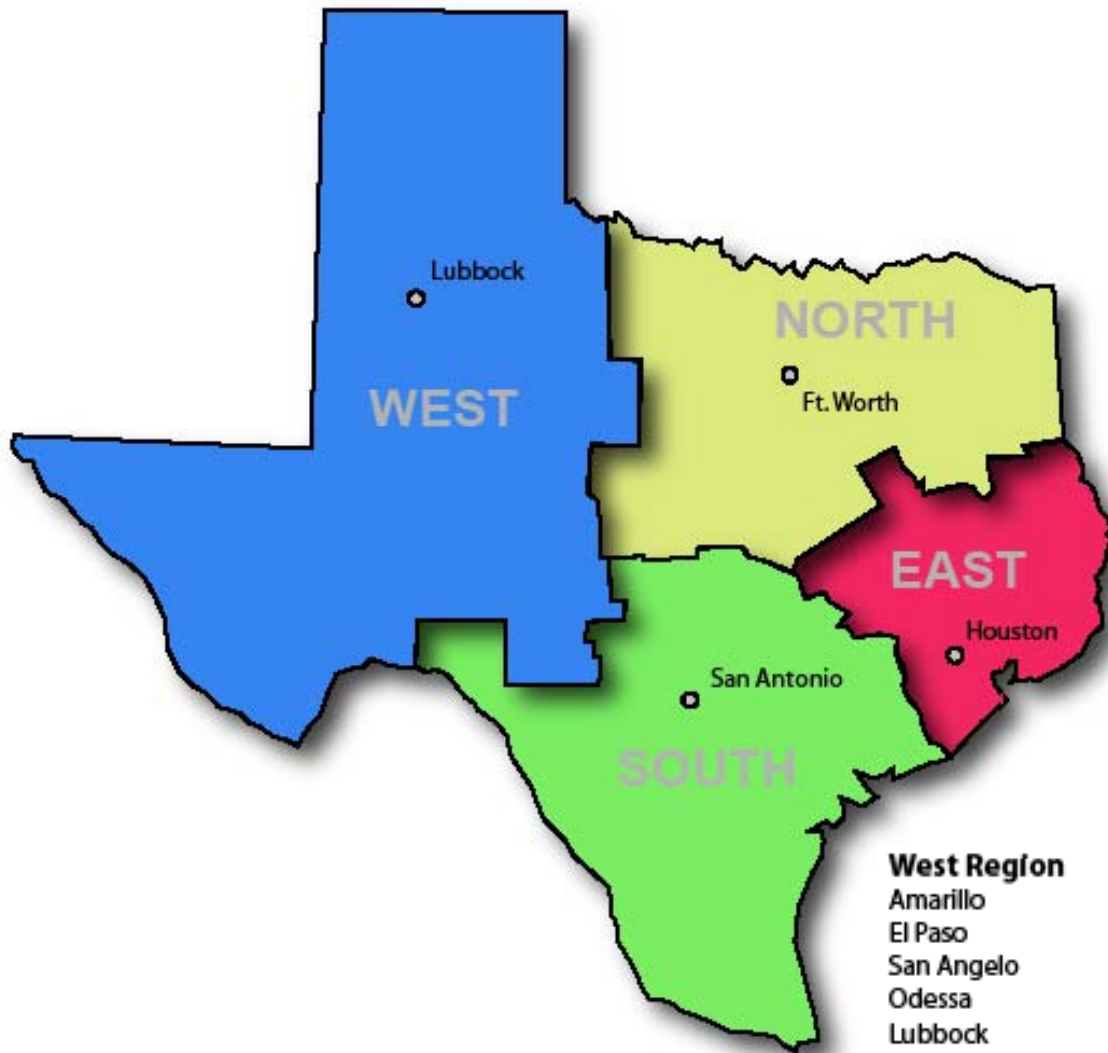


Regionalization

- **Regional Functions/Org Charts**
- **Regionalization Briefly**
- **What Regions Are and Aren't**
- **Regions and the MPO**
 - Or “How does this affect ME?”



The Regions



West Region

Amarillo
El Paso
San Angelo
Odessa
Lubbock
Abilene
Childress

North Region

Atlanta
Fort Worth
Tyler
Wichita Falls
Paris
Dallas
Waco
Brownwood

South Region

Yoakum
Pharr
Corpus
San Antonio
Laredo
Austin

East Region

Beaumont
Bryan
Lufkin
Houston

Regionalization of Texas Department of Transportation

